

Annual Report 2020

Department of Planning

Broome County Department of Planning and Economic Development

Staff

PLANNING AND ECONOMIC DEVELOPMENT

Frank Evangelisti, Director

Lora Zier, Senior Planner

Beth Lucas, Senior Planner

Stephanie Brewer, Planner

Lori Darling, Senior Account Clerk

Frank Tolbert, Intern

GEOGRAPHIC INFORMATION SYSTEM

Douglas English, GIS Administrator

Joseph Gaynor, GIS Specialist

Brian Damour, GIS Technician

ENVIRONMENTAL MANAGEMENT COUNCIL

Administered by Beth Lucas, Senior Planner

Annual Report

DEPARTMENT OF PLANNING AND ECONOMIC DEVELOPMENT

Last year we kicked off the update to the County's 2013 comprehensive plan. It has been a very interesting to hear from residents about the County and taking the time to assess the impact of our plan. We hope to have the updated plan adopted in 2020. In 2019, we completed the County's first Parks Plan. The Planning Department worked with Broome County DPW to document the existing conditions and identify infrastructure priorities for future improvements. The Parks Plan was adopted by the Legislature and is now being used to guide projects in our parks.

Our iDistrict Art Parks and Murals and Mosaics, both funded by the Greater Binghamton Fund, moved forward in last year. Working with the Broome County Arts Council and representatives from Binghamton and the Town of Union, we developed a call for artists and identified prime locations for public art.

We continued our partnership with the Koffman Southern Tier Incubator to identify and fund student-led companies. Through this program, the County gives modest grants to entrepreneurs who have demonstrated an ability to find new niche markets and develop a viable product.

Mission

The Department of Planning and Economic Development provides professional services to many departments in Broome County Government, local municipalities as well as other public and private entities. These services include preparing comprehensive plans, researching land-use planning issues, preparing and administering grants, assisting with economic development, conducting environmental studies and assessments, carrying out reviews of development proposals, preparing tax maps, providing GIS mapping, and coordinating municipal training on a wide variety of subjects.

Planning staff works in close collaboration with the Agency (Broome County Industrial Development Agency), Environmental Management Council, Binghamton Metropolitan Transportation Study, Broome County Flood Task Force, Broome County Land Bank, the Broome-Tioga Stormwater Coalition, the Broome County Agriculture Task Force, and the Susquehanna Heritage Area.

COMPREHENSIVE PLAN

In 2013, Broome County adopted its first countywide comprehensive plan in over 50 years. Last year, we began the process to update this very successful plan. We formed a steering committee consisting of representatives of higher education, workforce development, the Legislature, the Executive Office, the Office for the Aging, Public Works, the agricultural community, rural villages, and urban centers. To gather public input, we surveyed over 1,200 residents. We also met with a wide array of stakeholder groups including the Broome Leadership Institute, the Environmental Management Council, downtown business owners, the Susquehanna Heritage Area, students at Binghamton University, and high school students who are part of Cornell Cooperative Extension's Citizen U program. Adoption of the updated plan is expected in 2020.



UPSTATE REVITALIZATION INITIATIVE

One of the most successful ideas in the 2013 Comprehensive Plan was to create iDistricts in the downtowns of Binghamton, Endicott, and Johnson City. Through the Upstate Revitalization Initiative, New York State made \$20 million available for the Greater Binghamton Fund to carry out projects in the iDistricts. Projects were funded in three categories:

- 1 Commercial + Mixed Use Property Revitalizations
- 2 Housing Rehabilitation
- 3 Streetscape Improvements

The Planning Department secured two of the streetscape grants from the Greater Binghamton Fund: \$240,000 for the Development of 28 Murals and Mosaics in the iDistricts and \$1.3M for the Development of Three iDistrict Art Parks.

Public Art Rendering from Johnson City iDistrict Plan



After working closely with the Broome County Council on the Arts and representatives from Binghamton and the town of Union, we expect to release a call for artists in early 2020 for the mural and mosaic projects. We began work on a design for the Johnson City Art Park to be installed at Jennison Park. The Binghamton Art Park, which is located in Governmental Plaza, is expected to go out for bid in late 2020.

GO ALL OUT BROOME

In 2019 there was continued promotion of outdoor recreation opportunities through Go All Out Broome. Go All Out provides readily accessible information for residents and visitors related to outdoor recreation as a tool for tourism, economic development, wellness, alternative transportation, and other related initiatives through Facebook, Instagram, and the website: www.GoAllOutBroome.com,

Initial program implementation included development of branding, logos, website, and social media presence. In 2019, the focus was on raising awareness about the program through with the intent of driving people to the website and social media pages. This included development of a

promotional brochure, development of promotional items, and targeted advertising on social media. In addition, the County integrated the Go All Out brand into relevant County-sponsored events like Broome County Park's Fall Festival, the Dick's Sporting Goods Open, LGT Tennis Challenger, Luma, and the Beer Tree River Float.



A major success was the launch of the Broome County Dozen Hiking Challenge in partnership with the Triple Cities Hiking Club. Planning staff worked with TCHC volunteers to identify twelve unique hiking spots throughout the County. Residents and visitors that complete all hikes can submit their information and receive a patch showing that they have completed the challenge. The project is a true partnership with information housed on goalloutbroome.com and promoted by Go All Out and all submissions being managed by the TCHC.

Go All Out activities have proven to be successful since the program's launch. The website has received nearly 53,000 page views with a large spike in viewership at the launch of the hiking challenge. The program's Facebook page has continued to increase with 2,500 followers, with no paid promotion, and the post launching the hiking challenge reached nearly 36,000. The Go All Out Broome Instagram page has a more modest following, just over 1000, but it has been steadily growing. It has been a great way to connect with community and see how they explore the County.

In 2020, we plan to continue promotional activities through events in the community and social media. Through the addition of paid social media ads we can further expand our reach within the community and beyond. In 2020, Go All Out will be a key part of promoting many of the new parks and waterfront improvements going on at the County including new boat launches, scenic outlooks, playgrounds and trails. We also plan to add more data to the interactive map on the website.

STUDENT ENTREPRENEURSHIP GRANT PROGRAM

Working with students at Binghamton University and the Koffman Southern Tier Incubator, Broome County created a program to address the 'brain drain' and foster the innovation economy. Members of the Broome County Department of Planning closely collaborated with University

students to research and assess entrepreneurship grant programs that have been successful in other parts of the country. This was backed up by a survey of 667 students at the University and SUNY Broome, with results indicating that 80% would be interested in staying in the local area upon graduation if there was a countywide entrepreneurship grant program to fund student startups.

As the program developed, it was refined by the expertise and experience of the entrepreneurship professionals at the Koffman Southern Tier Incubator. Grant recipients are given more than a check; they are part of a comprehensive program that helps nurture their ideas into fully formed businesses. Using the Hotel-Motel Economic Development and Marketing fund, grants of \$5,000 were made to the Koffman Southern Tier Incubator to be provided to two student-led firms. To date, the program has provided funding for the following startups:

AdamaDoll - Business Owner Hazel McKenzie
Enhance-VR, LLC - Business Owner Matthew Gill
ChemSense - Business Owner Lynn Schmitt

The Student Entrepreneurship Grant program has been extended into 2020.

CENSUS COMPLETE COUNT COMMITTEE

Every ten years, the Constitution requires a complete count of the US population. Getting an accurate count is vitally important, because Census figures are used to determine a wide array of Federal and State funding allocations and is the basis for apportioning election districts. The decennial Census is set to take place in 2020, and once again the Planning Department is deeply involved. Our work starts more than a year before the actual count. We coordinate with the Census Bureau to ensure that they have accurate maps for the County. As we approached the

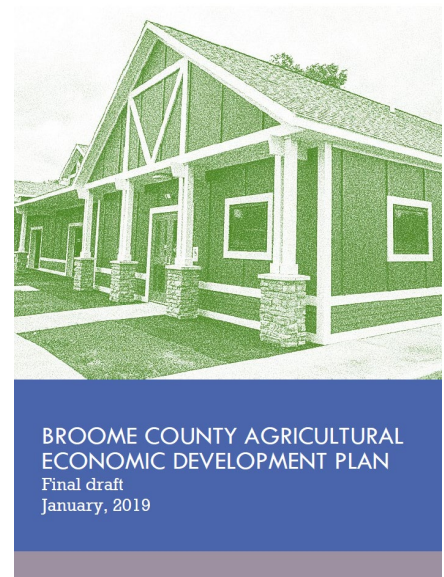
Census year, the County formed a Census Complete Count Committee which consisted of representatives from the Health Department, Office for the Aging, Department of Social Services, Broome County Public Library, Your Home Public Library, and Planning. The Committee began by developing its message for promoting Census participation and identifying potential partners.



AGRICULTURAL ECONOMIC DEVELOPMENT PLAN

The Planning Department secured a \$50,000 grant from the New York State Department of Agriculture and Markets to update the County's 2001 Agriculture Economic Development Plan. The County matched the \$50,000 grant with \$10,000 from the Hotel-Motel fund and \$40,000 of in-kind services.

The County hired EDR to prepare the update. One important feature of the plan was the development of grant-ready ideas to support agriculture in Broome County. The consultants gathered demographic, market trend, and land use data and the Planning Department worked with Cornell Cooperative Extension of Broome to conduct four focus groups to obtain input from Broome County's farmers and agricultural businesses. The plan was adopted in early 2019.

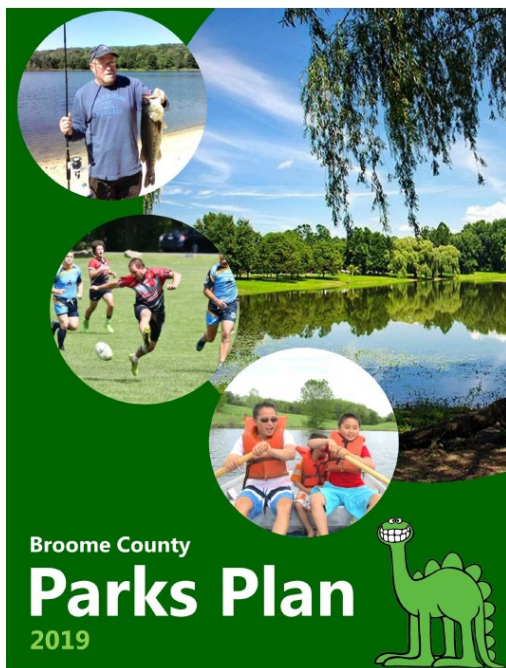


BROOME COUNTY PARKS PLAN

The Broome County Planning Department in cooperation with the Parks Department and the Department of Public Works finalized the Broome County Parks Plan. In 2018, the steering committee solicited input from various recreational group stakeholders at a public workshop.

Participants brainstormed ideas related to the strengths, threats, and opportunities facing Broome County Parks. The Broome County Parks Managers met with the steering committee to discuss their role and what could be done to improve park maintenance and operations. Using aerial photography, they mapped park areas where there are issues that need to be addressed or opportunities to improve park services.

The Planning Department worked with Broome County DPW to complete a facilities inventory of the parks. This involved documenting the existing conditions and identifying infrastructure priorities for future improvements. In addition, a Parks Department intern



began to document the ADA accessibility of paths, ramps, and parking lots within the parks. Nearly 50 locations within the parks were measured and analyzed for their ADA compliance; this inventory helped determine where accessibility gaps exist within the park system, and establishes locations to focus future improvements.

The Parks Plan was adopted by the Broome County Legislature in 2019. Recommendations and actions identified in the plan will be used to pursue grant opportunities through the Consolidated Funding Application (CFA) and other funding sources.

TOWN COMPREHENSIVE PLANNING

The Broome County Planning Department offers support and technical assistance to local municipalities to write their comprehensive plans. By preparing a comprehensive plan, a community lays out its shared vision and builds consensus for public investment and regulatory policies. The plan can be used to protect resources, give validity to local land use decisions, guide infrastructure investments, support grant writing, and foster economic development.

Village of Port Dickinson Comprehensive Plan

In 2019, the Planning Department began work on the Village of Port Dickinson's first-ever comprehensive plan. As part of the plan, we gathered information about the existing conditions in the village including demographics, housing, facilities and utilities, land use, local laws, and transportation. In the Spring of 2019, the Planning Department developed and distributed a public survey that asked residents questions about various topics regarding life in the village. A total of 124 households responded, representing a 23% response rate. The Planning Department will continue to work on the plan with the Village with an anticipated completion date of Summer 2020.

MUNICIPAL TRAINING

New York State requires all zoning and planning board members to receive 4 hours of training each year. In 2019, we extended our successful partnership with lawyers from Coughlin and Gerhart, LLP to provide a day-long training. Once again we packed the room at the Taste NY building on the campus of Cornell Cooperative Extension of Broome



County. Attendees learned about Planning for Agriculture, Agricultural Assessment Program & Farm Building Exemptions, Cannabis in New York: Legal Updates and Local Planning Issues, and Case Law Update.

You can view the presentations here: www.gobroomecounty.com/planning/pubs

BROWNFIELDS

771 Upper Court Street – Former Travelers Inn

The Travelers Inn on Upper Court Street in Kirkwood was devastated by the flood of 2011. The business never recovered from the disaster and ultimately the County foreclosed on the property for unpaid taxes. In late 2019, the Planning Department contracted with Delta Engineering to prepare a Phase I environmental assessment and asbestos pre-demolition survey in advance of demolishing the flood-ravaged buildings. The building has now been demolished and the site is largely cleared.

4301 Watson Boulevard – Former IBM Country Club

At the height of its local employment, IBM provided many services and amenities for its employees. The most visible of these amenities is the former country club on Watson Boulevard in the Town of Union. When IBM reduced its local presence, it sold off this landmark property. In an effort to see the site developed, Broome County is working with the Agency to have an environmental assessment prepared for the property. That work was initiated in 2019 and the results are expected in early 2020.



GOVERNMENT PLAZA

Broome County received an award of \$1.7 million to fund the design and construction of green infrastructure at Government Plaza. The Plaza houses the County Office Building, Binghamton City Hall and the regional New York State Office Building. The site features



Government Plaza Conceptual Design
Binghamton

an extensive two-level public plaza for which Broome County provides operations and maintenance services. Planning identified an opportunity to integrate innovative water management solutions while improving the overall aesthetics and functionality of the property through the addition of green infrastructure.

In 2019, Planning, in cooperation with Engineering and Facilities, began the design process for the project with the assistance of Delta Engineering. The design is nearing completion and we anticipate construction beginning in late 2020. The design includes several green infrastructure features such as green roofs, stormwater planters and cisterns. The design calls for opening the front wall along Hawley Street, creating an outdoor café space with storm water fountain, and building a public stage.

In addition to the green infrastructure improvements, Planning received funding through the Clean Energy Communities program for installation of a flexible PV solar canopy. The canopy will be part of the design of the stage along Hawley Street, providing shade and powering nearby electrical features in the stage area.

FLOODING AND HAZARD MITIGATION

Broome County Hazard Mitigation Plan Update

In 2018 the Planning Department began the update of the Broome County Hazard Mitigation Plan funded through a FEMA grant. FEMA requires updates every five years for participating municipalities to remain eligible for federal hazard mitigation funding. Broome County updates the hazard mitigation plan on behalf of the local municipalities who participate in the planning process by providing information and data related to hazard mitigation efforts, while Broome County Planning coordinates the overall planning effort.

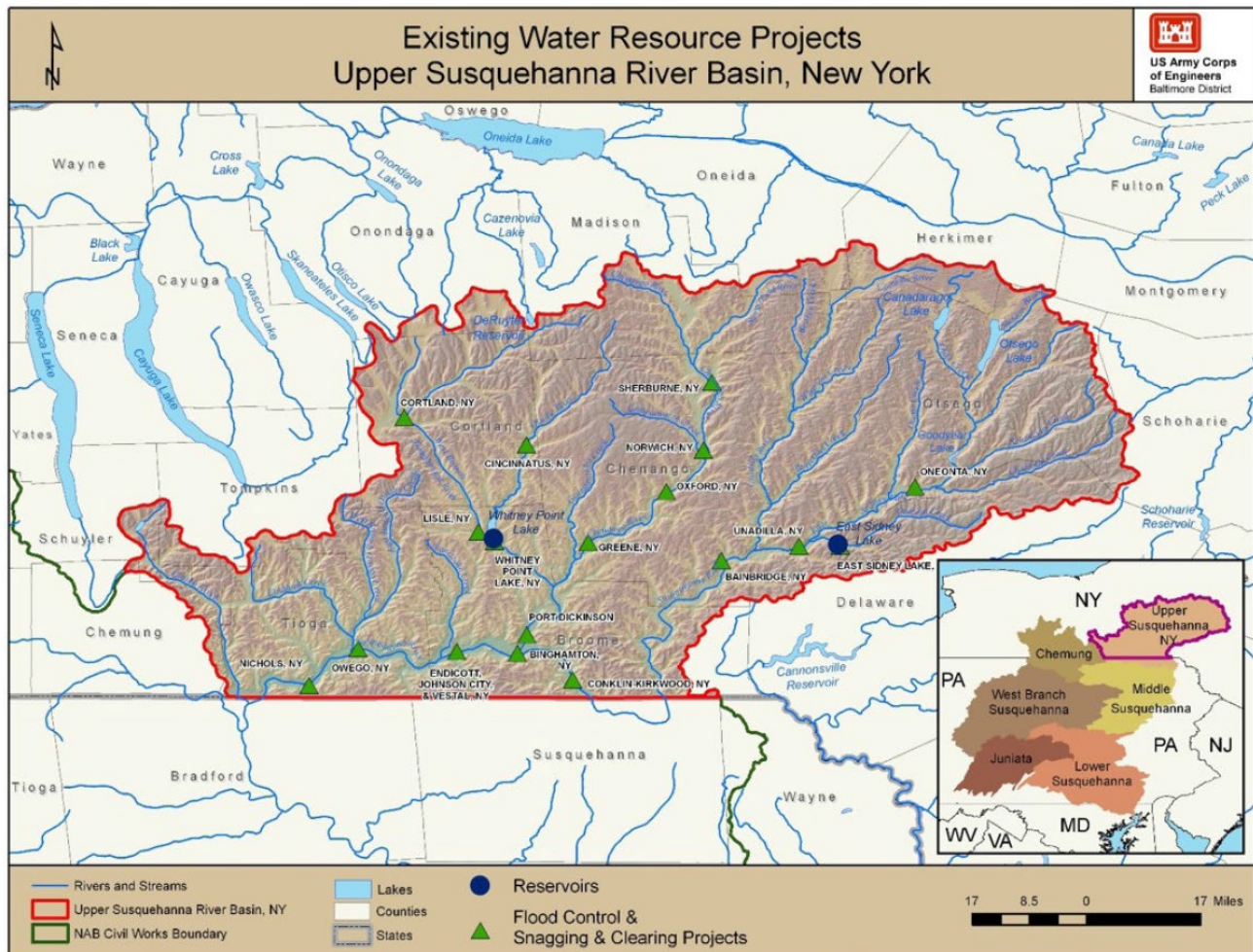
The Broome County Hazard Mitigation Plan assesses our natural hazard risk and vulnerability, summarizes legal, regulatory, and fiscal capabilities, and presents mitigation strategies to reduce risk to human health and safety, private property and municipal infrastructure. Hazards addressed in the plan include flooding, severe storms, severe winter storms, extreme temperatures, wildfires, earthquakes, and invasive species.

Planning and consultants from TetraTech worked to gather data and information from existing plans and mapping databases, organize meetings of the steering committee and planning partnership, and conduct various analyses and assessments. The plan was completed and approved

by FEMA in August of 2019 and adopted by Broome County in September. Planning worked with participating municipalities on adoption at the local level. Per the Hazard Mitigation Plan, Broome County Planning will continue to take the lead on monitoring and maintenance of the plan. In 2020, Planning will work with local municipalities to track the status of mitigation projects.

FEMA and Army Corps of Engineers Flood Studies

In 2018 FEMA finalized Levee Analysis and Mapping Procedures (LAMP) Plans for several Broome County communities including the City of Binghamton, Towns of Union and Vestal, and Villages of Deposit, Endicott, Johnson City, Lisle, Port Dickinson, and Whitney Point. LAMP is an approach to mapping flood hazards in areas protected by levee systems. Information in the plans will be used when FEMA eventually moves forward with official remapping of Broome County's floodplains. Flood remapping of Broome County is not currently scheduled by FEMA. The LAMP analysis determined that many of the levees in the County do not have enough freeboard to make them eligible for full accreditation. There are a few exceptions in the City of Binghamton, Port Dickinson, Lisle, and Whitney Point. For these systems, they can be accredited if the municipalities are able to provide the data and engineering analysis necessary to show they are sound and meet National Floodplain Insurance Program standards. These areas would not be considered part of the



floodplain upon remapping and would not require flood insurance or floodplain regulations. For all other areas without freeboard available, the plans outline the option of “freeboard deficient” status, requiring a similar level of analysis and cost as full accreditation. These areas would be listed as “D Zone” on the new flood maps once adopted, denoted as having higher risk, but would not require flood insurance or floodplain regulations.

In concert with FEMA’s studies, The US Army Corps of Engineers, in partnership with the NYS Department of Environmental Conservation began development of the *Upper Susquehanna River Basin Comprehensive Flood Damage Reduction Feasibility Study*. The intent was to comprehensively evaluate flood risk management needs and opportunities in the Upper Susquehanna and to assess potential for large scale flood projects improving the capacity of these systems. This project is currently in the later stages and is anticipated to be finalized by Spring of 2020.

A draft study was provided to Broome County and involved municipalities in summer of 2019. Preliminary results indicated that no large-scale projects would be feasible, meaning that additional investment by the federal government to enhance the capacity of the existing flood control structures is unlikely at this time. In response, Planning, with the assistance of Shumaker Engineering, submitted a lengthy response to the draft study outlining several uncertainties regarding the data used in the study and the potential for more focused mitigation alternatives. These comments were formally supported by our partners at the DEC and our federal representatives, Senator Schumer and Representative Brindisi.

Through the Broome County Flood Task Force, Planning has continued to update and coordinate the impacted municipalities regarding options for levee accreditation/improvement in light of the various recommendations coming out of these planning processes. Due to the uncertainty surrounding the potential for system upgrades and the schedule for remapping of the current flood maps, as well as the high cost of the engineering analysis, most communities have held off on initiating the accreditation/freeboard deficient analyses as outlined above until this is resolved. In 2020, upon finalization of the Army Corps study, the main focus will be working with the local communities on a plan for the levee systems to best protect residents, minimize flood insurance and economic development costs, and maximize resources for implementation.

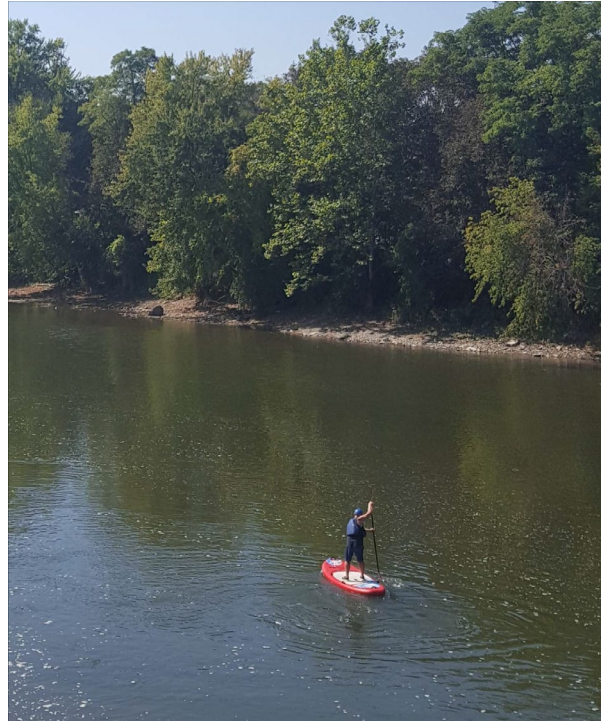
WATERFRONT PROJECTS

County-wide LWRP

The Planning Department received a grant from the NYS Department of State for developing a County-wide Local Waterfront Revitalization Program (LWRP) to update the the 2011 County-wide Inter-municipal Waterfront Access Plan and prepare a River Trails Plan.

The project includes updating the current plan, including identification of implementation projects in waterfront areas. We will also create a River Trails Plan that will lay out details associated with wayfinding for recreational river use, evaluation of existing services, solutions for identified hazard locations, and development of a river guide showing the river trails, access points, amenities, and services for use in awareness and promotion.

The plan will involve participation from the various riverfront municipalities and will enhance eligibility for the funding of waterfront projects in waterfront areas through the LWRP program. A request for proposals was released at the end of 2019. A consultant will be selected at the beginning of 2020 and the planning process initiated in spring.



Chugnut Trail

The Planning Department worked as a partner in the design of the Chugnut Trail extension located in the Village of Endicott and Town of Union. The existing Chugnut Trail is a one-mile paved trail located along the Susquehanna River behind Union-Endicott High School. The planned trail components will extend the Chugnut Trail from its current ending point, at the Vestal-Endicott Bridge, to Nanticoke Creek. This crosses Broome County owned properties along the river at Round Top and Grippen Parks. The Town of Union led an effort to fully design the entire trail based on the previously developed feasibility study. The design is complete and awaiting state approvals.

The Planning Department was awarded a grant from the Appalachian Regional Commission to construct a portion of the trail connecting Grippen and Roundtop Parks, increasing their value to the community as riverfront assets. The project includes the paved trail along the riverfront and a natural surface hiking trail leading people up the hill to the main part of Roundtop park. The project also integrates additional riverfront amenities funded by a State and Municipal Facilities Grant, described below. Once state approvals are given, construction will move forward.

State and Municipal Facilities Grant

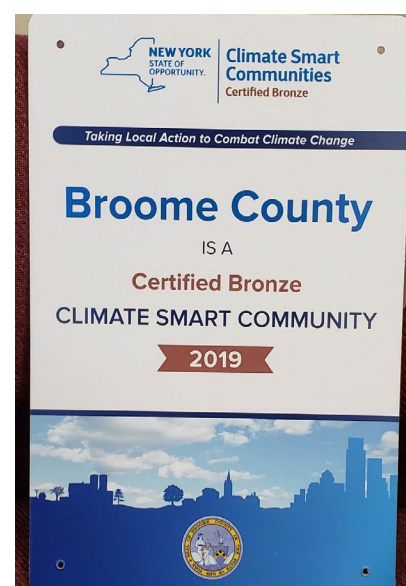
The Planning Department was also awarded funding for several riverfront improvements along the Susquehanna River in western Broome County through the State and Municipal Facilities program with the assistance of NYS Assemblyperson Donna Lupardo. Projects included in this request were an enhanced boat launch and scenic overlook at Grippen Park, a scenic overlook at Roundtop Park, and boat launches and amenities at Riverview, William H. Hill, and Harold Moore Parks. Design of these projects was completed in mid-2019. A construction contract was awarded in late 2019 and construction is anticipated to begin in spring of 2020.



ENVIRONMENT

Climate Smart Communities

2019 was a significant year for Broome County's Climate Smart Communities efforts. Planning worked to document the various sustainability efforts by County departments and partners that contribute to our overall sustainability and earn us credit under the NYSDEC program. In June the Legislature passed the Climate Smart Communities pledge, confirming the County's commitment to sustainability efforts and completing the final necessary step for applying for state certification. In September, Broome County was



officially awarded bronze certification as a Climate Smart Community. This status gives Broome recognition as a leader in sustainability and an extra advantage when applying for state grant funds.

In addition, Broome County was also officially designated a Clean Energy community through NYSEERDA's program. This was achieved by completing 5 of the 10 "high impact action items" as required by the program including support of Solarize programs for residential solar, financing for commercial and non-profit solar installations, energy benchmarking policy for county buildings, overall documented greenhouse gas reductions (totaling approximately 50%), and the CSC Certification noted above.

Participation in these programs has helped in acquiring funding through several grant awards being managed by Planning and Public Works including interior Lighting upgrades, installation of a flexible solar canopy, remote monitoring at flood control reservoirs, and drainage improvements in Deposit.

Stormwater Management

Broome County is a member of the Broome-Tioga Stormwater Coalition (BTSC), a group of municipalities that collaborate to address local storm water issues and meet federal and state Storm water mandates. Planning staff works with other BTSC members on implementation and compliance by providing public education, opportunities for public participation, and training and outreach services.

Beth Lucas served as the Chair of the group for 2019 and a representative for Broome County along with Engineering. A major task was the completion of the Stormwater Management Plan Program annual report for the full BTSC, which was completed in partnership with the Southern Tier 8 Regional Planning Development Board. Planning specifically is responsible for documenting activities related to public education and public participation activities conducted throughout the year. The annual report is a compilation of the activities of all regulated municipalities under the state regulations, as well as Coalition wide activities for submittal to the NYSDEC.





Public education and participation activities included attendance at local events, such as the annual Earth Fest, and coordination of the annual Riverbank Cleanup. The Riverbank Cleanup was held on October 5th. About 150 volunteers participated to collect approximately 1.25 tons of trash from the County's riverbanks. The BTSC continued implementation of the public education campaign, "Water from Rain", www.waterfromrain.org. The intent is to tie together all the local efforts for storm water education including: general best management practice for residents and businesses: awareness and implementation of green infrastructure practices; and flooding issues as they relate to storm water management.

Environmental Management Council

The Broome County Environmental Management Council (EMC) serves as a citizen advisory board to county government on environmental matters. The EMC conducts environmental research and planning, reviews environmental plans, reports and impact statements, and helps raise awareness through public participation and education programs. Planning provided technical, bookkeeping, and other support services.

The EMC typically meets bimonthly. In 2019, they met 6 times. Meetings included presentations and discussions on the following topics:

- New York State's clean energy goals
- Bluestone Wind project
- Government Plaza Green Infrastructure project
- Broome County Comprehensive Plan Public Meeting
- Broome County Solid Waste Updates
- EMC - Goals and Opportunities



Broome County Riverbank Clean Up

The EMC one again sponsored the Riverbank Cleanup in coordination with the Broome-Tioga Stormwater Coalition. The event helps promote the preservation of water quality and helps the County to meet our requirements under state and federal stormwater regulations. About 150 volunteers collected approximately 1.25 tons of debris and trash at locations along the banks of area's rivers and tributaries. See the Broome-Tioga Stormwater Coalition section of this report for more information about stormwater.

Earth Fest

EMC members and staff also participated in Earth Day Southern Tier's annual Earth Fest. This event raises awareness about local environmental issues, promotes membership opportunities, and recruits volunteers.

SUSQUEHANNA HERITAGE AREA

The Broome County Planning Department in partnership with the Tioga County Economic Development and Planning Department, provides administrative and technical support for the Susquehanna Heritage Area. The Planning Department



implements the goals (preservation, education, recreation, revitalization, marketing and partnerships) and recommendations of the 2010 *Susquehanna Heritage Area Management Plan*. The current plan builds upon previous plans that have been developed since the Susquehanna Heritage Area was recognized by the New York State legislature in 1982.

The goals of the plan are to identify, promote, and develop the historic, cultural, recreational, and natural resources of an expanded Susquehanna Heritage Area, encompassing Broome County and Tioga County. The plan guides the implementation of programs and projects to foster economic revitalization and enhance quality of life throughout the region. In 2019, the Planning Department carried out the following Susquehanna Heritage Area work:

Grant Funding

The two counties and all 39 municipalities and non-profit agencies are eligible to apply for State Heritage Area funding. In 2019, the Planning Department coordinated the Commission review of the projects applying for Heritage Area, Historic Preservation and Parks, and Environmental Protection Fund grants. The Planning Department reached out to the municipalities and nonprofit agencies informing them of the grants; arranged the meetings with the Commission, Advisory Board, and applicants; gave the applicants technical assistance in meetings and emails; reviewed the projects for consistency with the *Susquehanna Heritage Area Management Plan*; and prepared the Commission resolutions of endorsement and support for the applications. In 2019, the Planning Department coordinated the review for seven projects. In December 2019, two of these projects received grants: Roberson Museum and Science Center received funding for restoration of windows and trim on the mansion and carriage house, and the Town of Vestal received a grant to relocate the Train Depot to the Vestal Rail Trail.

Education, Marketing and Promotion

The Planning Department provided direction and coordination for the local participation in the 2019s *New York State Path Through History Weekends* – a bi-annual statewide event to promote the historical and cultural resources of New York State. Planning staff attended local meetings, provided technical assistance and direction for the local programming, and reached out to Broome County municipalities and historical and cultural groups to garner their interest and participation. Planning and GIS staff designed the interactive map, handout, poster, and event descriptions designed to promote these sites and events and raise awareness of the historical and cultural resources of Broome County and the Susquehanna Heritage Area. Broome County Planning used the Go All Out Broome website to promote these two Path Through History Weekends.

Municipal and Non-Profit Representation

The Susquehanna Heritage Area Commission and Advisory Board is comprised of representatives of the City of Binghamton, Village of Endicott, Village of Johnson City, Town of Colesville, Broome County, Tioga County, Visit Binghamton, Goodwill Theatre, Inc., Preservation Association of the Southern Tier (PAST), Broome County Arts Council, Tioga County Historical Society, and the local historian and landscape architect profession.

Commission and Advisory Board Meetings and Membership

Planning Staff continued to coordinate and facilitate the bi-monthly meetings of the Commission and Advisory Board and coordinate the Commission and Advisory Board membership. Lora Zier continued to serve as the Broome County Program Administrator, Commission Secretary, and Commission Representative for the Broome County Executive.

OTHER PLANNING ACTIVITIES

State Environmental Quality Review Act (SEQRA)

Planning continued to complete SEQRA reviews and provide technical assistance to Broome County departments for the compliance with the State Environmental Quality Review Act (SEQRA) as it pertains to County projects.

Land Use Reviews (239)

The Department has a legal obligation to conduct reviews and render advisory opinions on land-use proposals covered under NYS General Municipal Law 239 (l) and (m). The Department reviewed 178 cases in 2019.

Internship Program

The County's comprehensive plan calls on us to *'Engage Our Students and Young Professionals'*. As part of this effort, the Planning Department once again hosted an intern from Binghamton University. The 2019 spring semester intern was Frank Tolbert, from Binghamton University. Frank researched the history and purpose of the County's flood-control watersheds. His work will help us explain to the community the function of these often misunderstood facilities.

Broome County Construction Data Reports

The Department prepared the 2019 Construction Data Report. This report, available on Planning's website, provides an indicator of countywide growth and development patterns and trends, residential and nonresidential building data from municipalities, and tables and charts documenting annual building permit activity within the municipalities. The construction data is online here: gobroomecounty.com/planning/pubs

Public Engagement

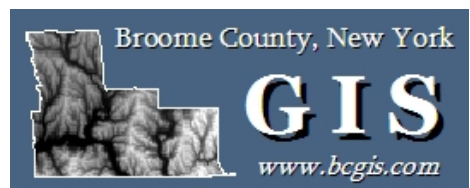
The Broome County Planning Department understands the importance of public engagement, and values the opinions of our residents, businesses, and other organizations. In 2019, the Planning Department's social media page, made 101 posts that were viewed 31,824 times and engaged 3,630 people. We will continue to use social media and other public outreach tools to engage our community.

GEOGRAPHIC INFORMATION SYSTEM (GIS) DIVISION

GIS Portal Website and Mapping Applications

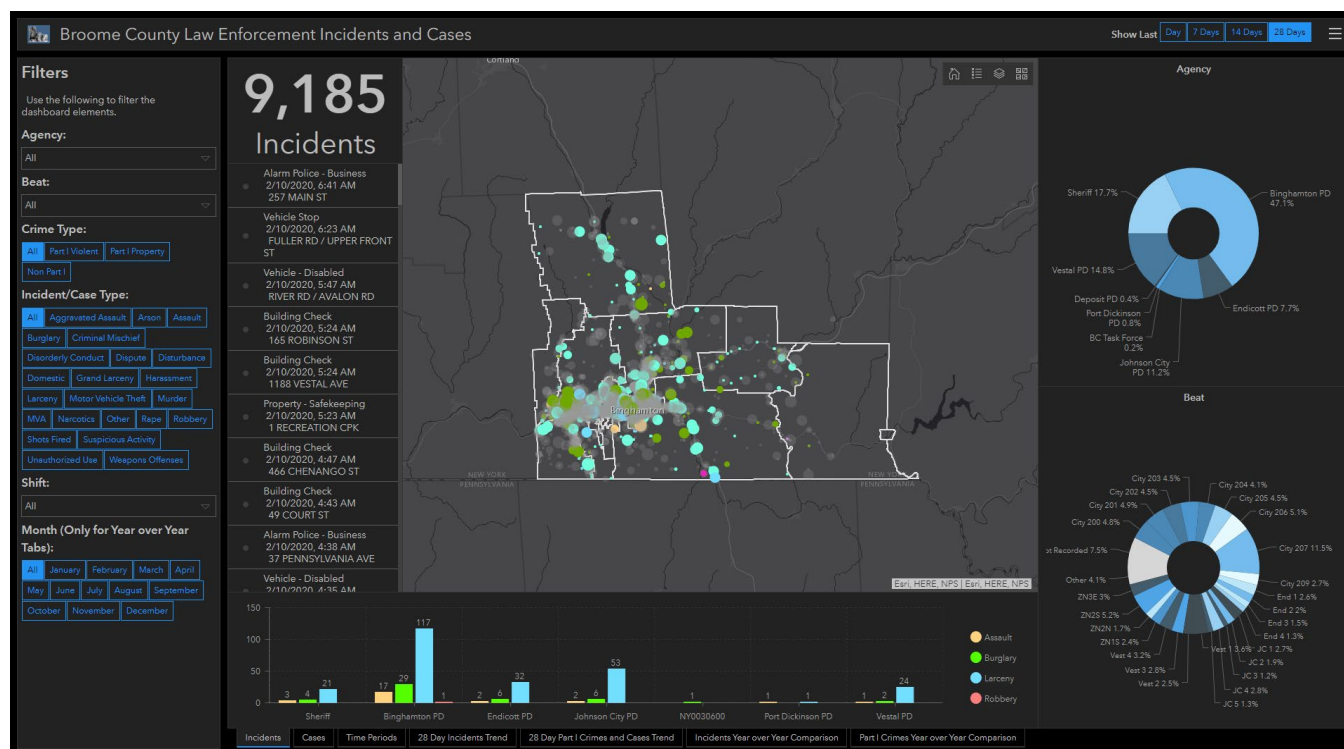
The GIS Portal website and mapping applications continue to be a highly-demanded and growing online county resource. In 2019 the GIS Portal website received over 294,000 visits by over 94,000 unique users. This represents a 9.9% increase in visits and a 14.3% increase in unique users over 2018. The most

viewed resource on the site was the *Parcel Mapper* with over 181,600 views (+10%). Parcel detail



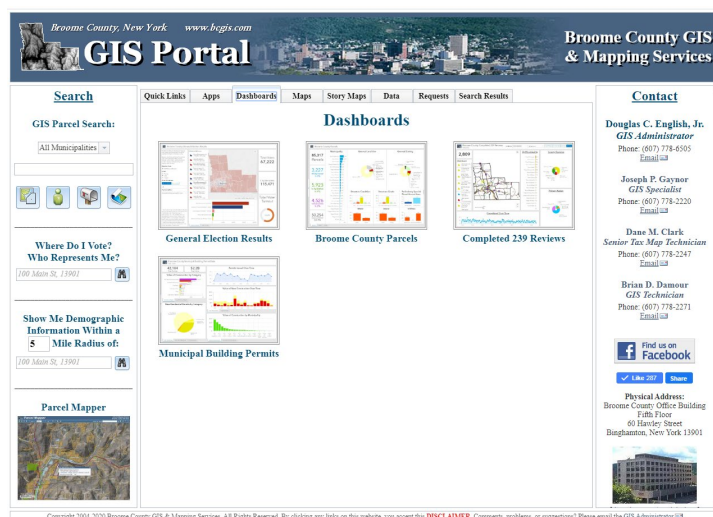
sheets were another popular resource with nearly 100,000 views (+12%). The *Election Mapper* was viewed over 2,400 times, and PDF tax maps were viewed over 8,200 times.

During 2019, a series of online dashboards were created. The most comprehensive dashboard was an Incidents and Cases dashboard utilized by local law enforcement agencies. This dashboard displays near real-time information on incidents as well as medium (28 days) to longer term (year-



to-date, last year, 2 years ago) information on incidents and cases. All information can be filtered by several variables including agency, beat, incident/case type, and time period.

In addition to the Incidents and Cases dashboard, a Municipal Construction Report, County Parcels, County 239 Reviews, and General Election Results dashboard were also created. These dashboards are public and can be accessed on the GIS Portal website under the Dashboards tab. As with the Incidents and Cases dashboard, these dashboards can also be filtered using different variables.

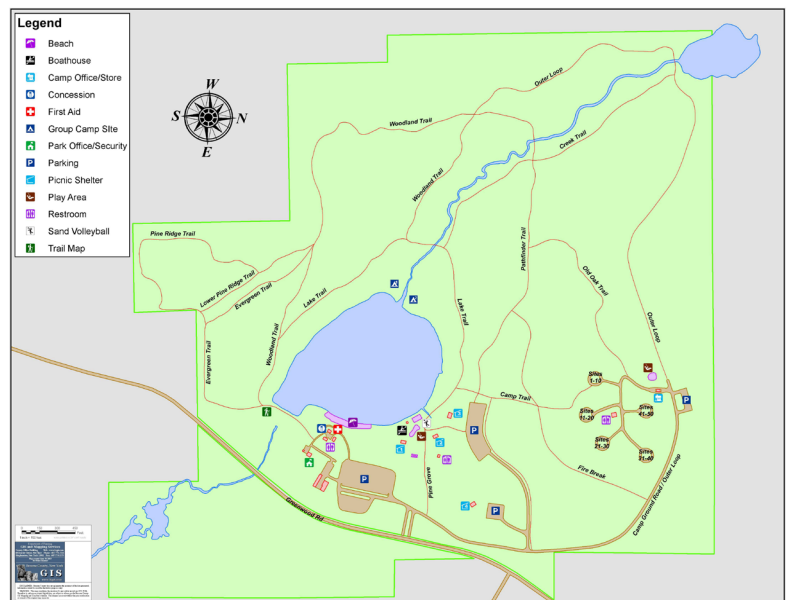


Other online GIS notes: opportunity zones were added as a layer to the *Parcel Mapper* and to the parcel detail sheets and the online demographic search function was updated with the newest census 5-year American Community Survey data.

County Departments

The GIS Division supports nearly all county departments in some capacity with mapping, data, and analysis. Some highlights from individual departments include:

- **Emergency Services:** continued to assign all 911 addresses within the county; continued to support 911 dispatch mapping; developed online damage assessment forms for data collection and mapping using Survey123; created fire battalion maps; continued to serve on the State NG911 GIS Subcommittee; produced LUMA Fest, Spiedie Fest, and Dick's Open maps.
- **Sheriff's Office:** incidents and cases dashboard created; continued to provide weekly, monthly, and year-to-date maps and data for long term, strategic/administration planning; continued to provide access to online web maps using ArcGIS Online.
- **Real Property:** continued to support tax mapping functions; continued to provide PDF tax maps and access to RPS data online through Image Mate Online from the GIS Portal website.
- **Planning & Economic Development:** continued to update 239 review information in the parcel data and the 239 review layer in the *Parcel Mapper*; provided maps for the Town of Sanford comprehensive plan; provided various maps and/or data for several different projects and grants including the land bank and the Agency.
- **Parks, Recreation & Youth Services:** produced updated facility maps of all county parks; developed a base map for Highland Park in the Town of Union.
- **Health:** provided various maps for the Community Health Assessment; mapped tobacco retailer location along with buffers in Johnson City; developed a Promise Zone interactive map for Mental Health for use on their website.
- **Elections/Legislature:** fulfilled various map and data requests for Elections and produced maps of annual additions to agricultural districts for



the Legislature.

City of Binghamton

At the end of 2019, the County Legislature passed a resolution extending the current County-City GIS inter-municipal agreement for another 10 years. During 2019, an average of over 19 hours of service per week was provided to the City with 400 map projects created. Some highlights include:

- *Police:* incidents and cases dashboard created; continued collaborating with SUNY Cortland to predict aggravated assaults using Risk Terrain Modeling (RTM); continued to provide technical support to the City's Environmental Policing Task Force; continued to provide weekly, monthly, and year-to-date map, charts, and graphs for long term, strategic/administration planning; provided support for the City Crime Intelligence Center; utilized ArcGIS Online to create web maps for police use; participated in various meetings.
- *Planning:* provided mapping for various projects and grants; continued to provide updated data and server map services for the City's Building Blocks application.
- *Binghamton City School District:* updated polling place and election district maps; developed safe walking routes to school maps.

BOARDS AND MEMBERSHIPS

Planning staff served on the following boards and committees in 2019:

- | | |
|--|---|
| ▪ Agriculture and Farmland Protection Board | ▪ Census Complete Count Committee |
| ▪ Agricultural Task Force | ▪ Communities Organizations Active in Disasters (COAD) |
| ▪ Aging Futures Partnership | ▪ Department of Public Art |
| ▪ BMTS Pedestrian and Bicycle Advisory Committee | ▪ Greater Binghamton Fund Work Group |
| ▪ BMTS Planning Committee | ▪ Greenway Steering Committee |
| ▪ Broome County Chronic Disease Leadership Team | ▪ Headwaters River Trail |
| ▪ Broome County Community Health Assessment Steering Committee | ▪ Local Emergency Planning Committee |
| ▪ Broome County Environmental Management Council | ▪ NYS DEC Region 7 Open Space Committee |
| ▪ Broome County Flood Task Force | ▪ Southern Tier East Regional Planning Development Board |
| ▪ Broome Tioga Stormwater Coalition | ▪ Susquehanna Heritage Area Commission and Advisory Board |
| | ▪ New York State Path Through History Local Committee |