

Broome County Environmental Management Council

Barbara J. Fiala, Broome County Executive



Broome County Office Building • 44 Hawley Street • P.O. Box 1766 • Binghamton, New York 13902
(607) 778-2116 • Fax (607) 778-6051 • Website: www.gobroomecounty.com

Broome County Environmental Management Council (EMC) Notes from the meeting held Thursday, March 3, 2011 Broome County Public Library, Court Street, Binghamton, NY

Present:

Members-at-Large: Tony Lubzanski, Erin Heard, Karen Ciatyk, Andre LaClair, Marley Urdanik, Tony Lubzanski and Bill Heaviside

CAC Reps: Cindy Westerman, Vestal

Ex-Officio Reps: Frank Evangelisti (BC Planning) Bob Fiacco (BC Parks)

Staff: Beth Egitto, BC Planning

Other: Eric M. Zeff, Louise Zeff, Al Coomie, John Skok, Bill Dickson, Mike Finnerty, Fred Rothman, Mike Parisio, Steve Austenfeld, Steve Gwin, Richard Andrus, Curt Pueschel, Julian Shepherd, Fiske Hanson, Victor Lamoureux, Rick Rumeka, and Lisa Young

1. The meeting was **convened at 6:05 pm**. Beth gave an overview of the EMC, current activities and upcoming special events.

2. **Special Presentation: Local Implications of the Emerald Ash Borer, Kevin Mathers, Cornell Cooperative Extension**

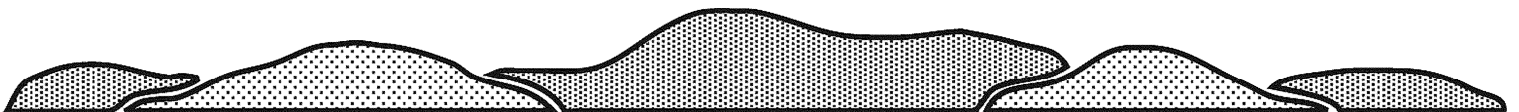
The Emerald Ash Borer (EAB) is a non-native wood-boring beetle that was first discovered in Michigan in 2002. Despite concerted efforts to prevent it from spreading, it has expanded its range to numerous other states including New York. EAB has killed millions of native ash trees, causing tens of millions of dollars of damage. When EAB becomes established in our area it will cause significant economic, public safety and ecological impacts. Kevin discussed these issues and how having a forest management plan in place can help communities and landowners reduce these negative impacts. Strategies include logging of the trees before they are infected, which would allow for a productive use of the wood, or treating the trees to prevent infection, which can be expensive and sometimes ineffective. Kevin emphasized that it is important for municipalities and individuals to inventory the Ash trees on their properties and streetscapes, so that they can appropriately assess their liability and make informed management decisions. The presentation can be found as an appendix to the minutes. Discussion followed.

3. **Privilege of the Floor/Announcements/Member Items of Interest**

- A legal notice in the Press & Sun indicated that there will be a public hearing regarding a local law for Outdoor Wood Boilers in the Village of Port Dickinson. It will be held at Port Dickinson Elementary, March 8th at 6pm.
- Andre mentioned that recently there has been a push to increase the percentage of Ethanol in gasoline from 10% to 15%. He stated that while on the surface it appears that it would be good for reducing dependence on fossil fuels; in fact, using a higher percentage of ethanol may harm engines and lead to less efficiency. Andre will look into the issue further for additional discussion at the NRC meeting.
- A Symposium on Energy in the 21st Century is being held Friday, April 8th at the Links at Erie Village in East Syracuse. More information can be found online at www.energy21symposium.org.

4. **Committee and CAC items**

- Andre LaClair stated that the Fenton CAC is up in running. However, they are currently looking into the development of an Environmental Review Board as an alternative to a CAC. They are currently working to define their role, bylaws and duties and will present it to the Town Council.



- Cindy reported that the Vestal CAC met on February 17th. Councilman David Marnicki, the new liaison between the CAC and the Town Board, was in attendance. The CAC gave him an overview of the organization and its activities. The group also further discussed the issue of forest management at Jones Park, the need for an overall plan for the Town's parks, and the idea of incorporating land on Rock Road into a park. There was also discussion about reinitiating an aquifer study that had been started by Karen Salvage several years ago, but had stalled. The next meeting will be March 17th at Town Hall.
- The Natural Resources Committee met on February 17th. Beth distributed a compilation of all of the most current drafts from the Open Space Plan. The group reviewed the plan in its current state and discussed the future direction and format of the plan. The group agreed that it would be a good idea to complete the inventory portion of the plan as a first step, including maps. At that time, the timeline can be assessed and the group can further discuss the development of the second portion to serve as a technical guide to using the inventory information. Beth mentioned that she will be out of the office on March 17th, therefore the group agreed to meet on the 24th instead. The group will discuss the format of the individual sections, making updates to incorporate new or changed information and the content of the maps.

5. Membership and Administrative Items

- At a meeting of the Headwaters River Trail group on February 18th, facilitated by Erin, attended by Beth and Bill, the group discussed the upcoming Susquehanna Sojourn a weekend boating trip from Bainbridge, NY to Great Bend, PA. The event will be a great way to highlight the scenic beauty and recreational value of our local rivers, and the importance of maintaining them. The group is looking for sponsorship for the event from local businesses and organizations. Beth felt that this might be a good opportunity for the EMC to support a program that emphasizes the importance of environmental stewardship and get the EMC name out into the community. The Joyce KL Smith Memorial Fund is dedicated to providing environmental education opportunities and this seems to be a perfect fit. After some discussion, the group agreed that this would be a good idea and the group would like to offer \$250 toward the event. Beth will write up a resolution for approval at the April meeting.
 - The opening reception for the Joyce KL Smith Photo Show is scheduled for Wednesday, May 11th. Once again, members will be asked to volunteer their assistance for this event. Details will be discussed further closer to the event. Andre asked about the status of the Earth Fest. Beth had not received notification for registration at the time. [The EMC has since been notified that the event will be held April 30th at Macarthur Elementary on Vestal Ave in Binghamton.]
 - Tony asked about the status of the Legislative Reps and whether they had been contacted about the EMC. Beth noted that they have been added to the mailing list but there has not been any direct contact with them yet. The Planning Department had not received the resolution appointing them officially until the day prior to the meeting. The group will make an effort to reach out to them in the near future.
 - The Livable Communities Alliance will attend the April EMC meeting to give an overview of the organization and how other organizations can be involved.
- 6. The meeting adjourned at 7:55 pm. Next meeting:** Thurs., April 7 @ 7:00pm, United Way of Broome County, Vestal.

Emerald Ash Borer

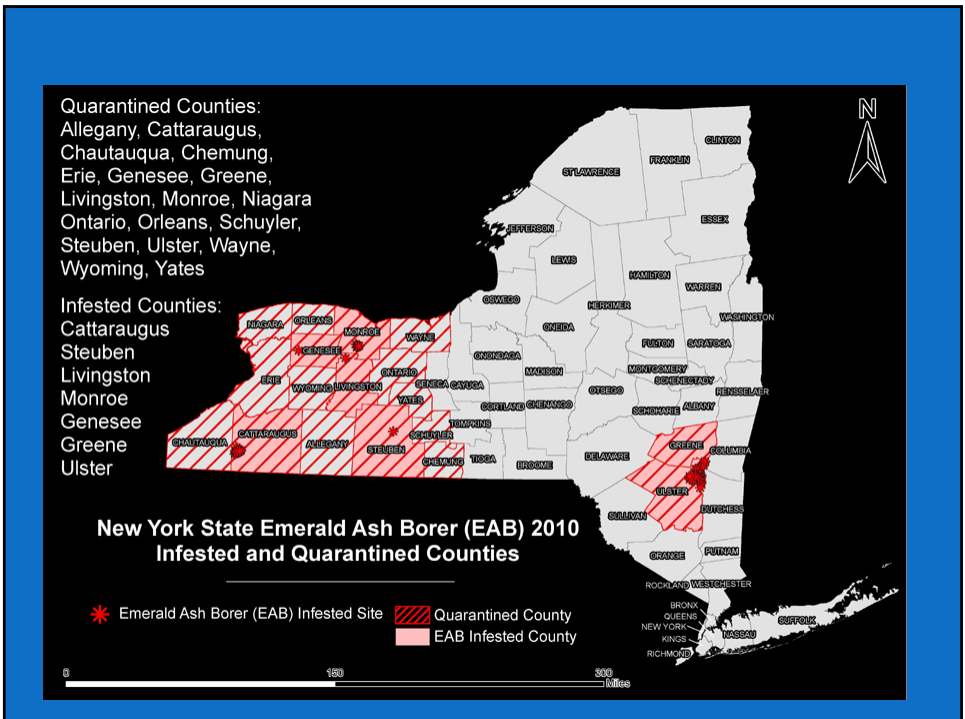
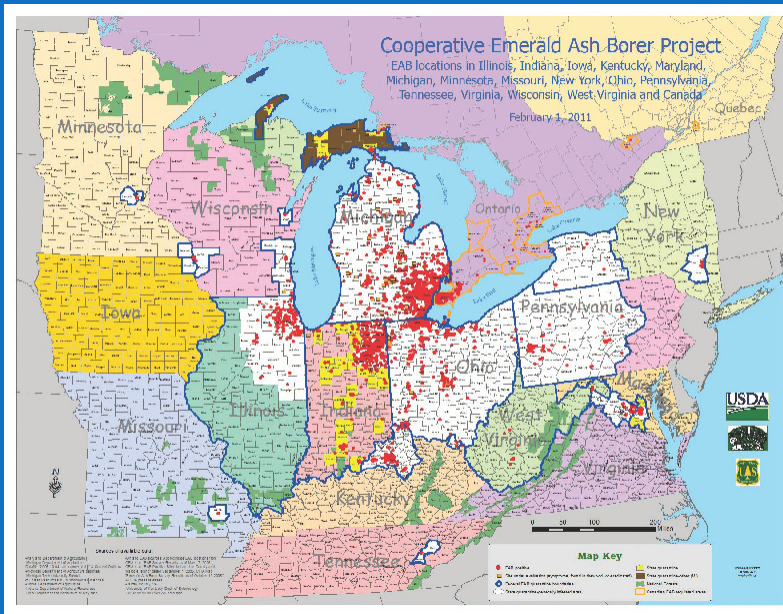
Are we prepared?



EAB History

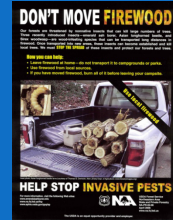


- First “discovered” in Michigan in 2002
- EAB became established in early 1990’s
- Quarantine & eradication have not stopped the spread of EAB
- Now in 15 additional states & 2 provinces
- Found in western NY in 2009
- Research on biocontrol and insecticides
- SLAM approach (Slow Ash Mortality)



How Does it Move?

- Natural movement (1/2 mile/yr.)
- Moving Infested Ash Products
 - Firewood
 - Logs, wood chips, nursery stock



Evidence of EAB

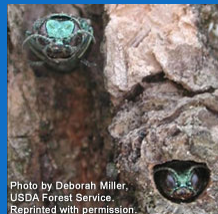
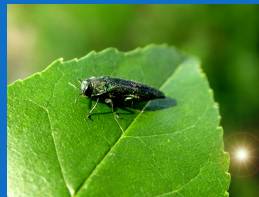


Photo by Deborah Miller, USDA Forest Service. Reprinted with permission.



EAB Detection

- Purple prism traps and trap trees
- “Biodetection” with wasp
- Reported by citizens
- EAB is usually not detected until 2-3 years after infesting a tree



EAB Impacts

- Kills all species of native ash
- Millions of trees killed
- Ten's of millions of dollars in damage to forests & landscape trees



Preparing for EAB



Cornell University
Cooperative Extension

New York State Emerald Ash Borer Community Preparedness Plan Development Workbook September 2010

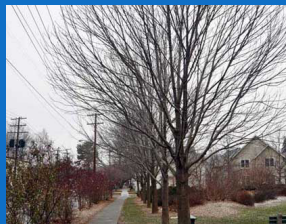


EAB Preparedness Planning

EXTENSION ENTOMOLOGY | EAB IN INDIANA

**Emerald Ash Borer
Cost Calculator**

**PURDUE
UNIVERSITY**



The City of Ithaca has 383 ash trees -- (Photo by Rachel Philipson, Ithaca Times)

Green Isn't Always Good

Submitted by Lizzie Yetter, Newark Valley High School student, and Broome-Yoga BOCES New Visions Sustainable community academy

This is the case with the Emerald Ash Borer (EAB), a little green beetle, which destroys ash trees. The EAB was first discovered in Michigan in 2002 and has spread to 15 states, including New York, since then.

To help prevent the spread of EAB, New York state has issued a firewood regulation as of June 2008 not to move firewood over 50 miles from where it has been cut. Once infested with EAB an ash tree will die within two to four years. The EAB poses a safety hazard to towns and villages because ash is commonly used as street trees. Once infested ash trees die, they become brittle and

limbs and branches will break off creating liability issues for towns.

Planning ahead can help communities prepare for both the economic and physical impacts of an infestation of this invasive species. Effective plans will include a survey to identify the location of ash trees, and actions for removing dead trees and/or protecting trees with pesticides. Once trees become infested it may be too late to make arrangements to treat trees with pesticides.

EAB also poses a threat to private forest owners as well. These owners should take a look at their forest management plans and determine a course of action prior to the arrival of EAB. The EAB has the potential to destroy ash populations throughout the state, and action needs to be taken to help preserve our forests and urban trees. For more information on Emerald Ash Borer visit emeraldashborer.info or nyis.info/.

Management Decisions for Street/Landscape Trees



- Remove all ash trees when EAB arrives
- Remove some ash trees preemptively
- Remove some ash trees & treat others with insecticides
- Replace some or all removed ash trees? How will we pay for this?

For Further Information

- www.emeraldashborer.info/
- <http://nyis.info/insects/EmeraldAshBorer.asp>
[X](#)
- <http://www.dec.ny.gov/animals/7253.html>